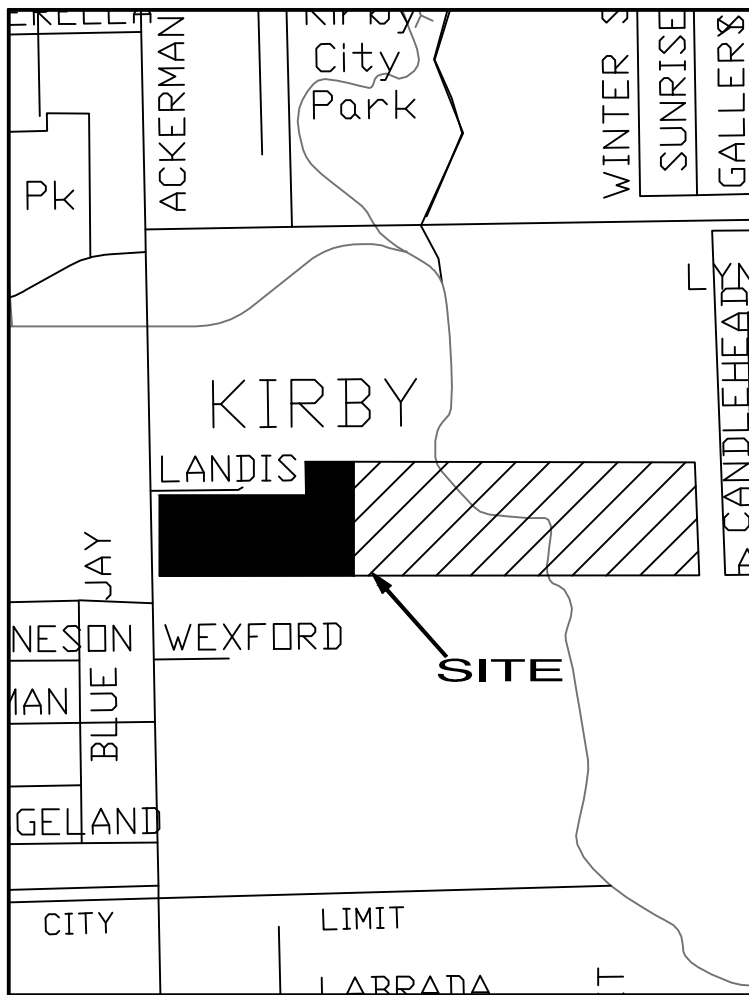


VICINITY MAP



SITE MAP

# TRUE VISION CHURCH NEW MULTI-PURPOSE FACILITY AND CHAPEL 2826 ACKERMAN ROAD KIRBY, TEXAS 78219 (210) 590-4460

GENERAL CONTRACTOR:  
TIMBERCON CONSTRUCTION, INC.  
1241 UNIVERSAL CITY BLVD.  
UNIVERSAL CITY, TX 78148  
(210) 590-2544  
(210) 590-2352 FAX

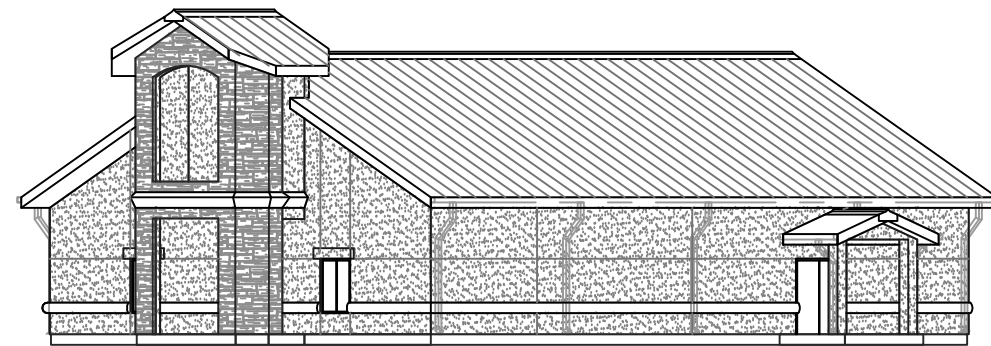
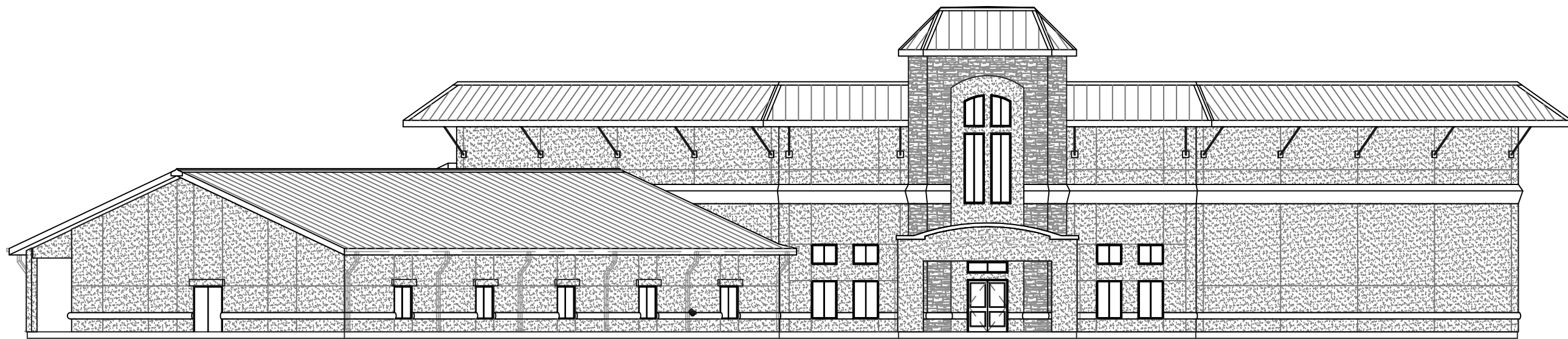
CIVIL ENGINEER:  
JOHN LUCE  
CIVIL ENGINEERING CONSULTANT  
P.O. BOX 405  
BULVERDE, TX 78163  
(830) 980-7878  
(830) 980-7842 FAX

STRUCTURAL ENGINEER:  
J.M. NUNN, P.E.  
HILL COUNTRY STRUCTURAL  
1204 N. LLANO, SUITE D  
FREDERICKSBURG, TX 78624  
(830) 990-4700  
(830) 990-4718 FAX

MECHANICAL DESIGN:  
PHIL POTTER  
POTTER AC, INC.  
9327 RANCHERO ST.  
SAN ANTONIO, TX 78240  
(210) 690-5826  
(210) 690-8442 FAX

ELECTRICAL DESIGN:  
RANDY AMESCUA  
TRIPLE-R ELECTRIC, INC.  
19892 FM 2252  
SAN ANTONIO, TX 78266  
(210) 946-5522  
(210) 946-9049 FAX

PLUMBING DESIGNER:  
DAVID VASQUEZ  
PLUMBING DESIGNER  
7221 LAMB RD.  
SAN ANTONIO, TX 78240  
(210) 865-2294



SHEET LIST TABLE			
SHEET #	SHEET TITLE	SHEET #	SHEET TITLE
GENERAL		STRUCTURAL	
00	COVER SHEET	S1.1	FOUNDATION PLAN
01	GENERAL NOTES	S1.2	GRID PLAN
02	ADA GUIDELINES 1	S2.1	FOUNDATION SECTIONS & GENERAL NOTES
03	ADA GUIDELINES 2	S3.1	BALCONY FRAMING PLAN
CIVIL		S3.2	MEZZANINE FRAMING PLAN
C1	DIMENSIONAL CONTROL PLAN - PHASE 1	S4.1	ROOF FRAMING PLAN
C1A	DIMENSIONAL CONTROL PLAN - PHASE 1&2	S5.1	TOWER FRAMING PLAN
C2	SITE GRADING PLAN - PHASE 1	S6.1	FRAMING SECTIONS
C2A	SITE GRADING PLAN - PHASE 1&2	S6.2	FRAMING SECTIONS
C3	UTILITY PLAN - PHASE 1	S6.3	FRAMING SECTIONS
C3A	UTILITY PLAN - PHASE 1&2	S6.4	TOWER FRAMING PLAN
C4	SEDIMENTATION & EROSION CONTROL PLAN	S6.5	FRAMING SECTIONS
ARCHITECTURAL		S6.6	FRAMING SECTIONS
D1	SITE DEMO PLAN	S7.1	GARAGE FOUNDATION & FRAMING PLANS
SP1	SITE PLAN	S8.1	FRAMING SECTIONS
MSP	MASTER SITE PLAN	S9.1	CHAPEL FOUNDATION & FRAMING PLANS
A1.11	BUILDING CODE DATA - SANCTUARY FLOOR PLAN - MAIN LEVEL	S10.1	CHAPEL FOUNDATION SECTION & GENERAL NOTES
A1.12	BUILDING CODE DATA - SANCTUARY FLOOR PLAN - UPPER LEVEL	S11.1	CHAPEL FRAMING SECTIONS
A1.20	BUILDING CODE DATA - SANCTUARY FLOOR PLAN - ALTERNATES 1 & 2	S11.2	CHAPEL FRAMING SECTIONS
A1.30	BUILDING CODE DATA - CHAPEL & GARAGE FLOOR PLANS	MECHANICAL, ELECTRICAL AND PLUMBING (MEP)	
A2.11	SANCTUARY FLOOR PLAN - MAIN LEVEL	M1.1	SANCTUARY HVAC ROOF PLAN
A2.12	SANCTUARY FLOOR PLAN - UPPER LEVEL	M1.2	SANCTUARY HVAC PLAN - UPPER LEVEL
A2.21	SANCTUARY FLOOR PLAN - MAIN LEVEL - ALTERNATE 1	M1.3	SANCTUARY HVAC PLAN - MAIN LEVEL
A2.22	SANCTUARY FLOOR PLAN - UPPER LEVEL - ALTERNATE 1	M1.4	CHAPEL HVAC PLAN AND AIR HANDLER DETAILS
A2.30	CHAPEL & GARAGE FLOOR PLANS AND PARKING CANOPY COVER PLAN	M2.1	AIR HANDLER DETAILS
A2.41	FLOOR PLAN ENLARGEMENTS	M2.2	VENT HOOD & GENERAL NOTES
A2.42	FLOOR PLAN ENLARGEMENTS	M3.0	SCHEDULES & GENERAL NOTES
A3.1	SANCTUARY ROOF PLAN	E1.0	SITE PLAN - ELECTRICAL
A3.2	CHAPEL & GARAGE ROOF PLANS AND PARKING CANOPY COVER PLAN	E1.1	FIRST FLOOR PLAN - LIGHTING
A4.1	SANCTUARY EXTERIOR ELEVATIONS	E1.2	BALCONY FLOOR PLAN - LIGHTING
A4.2	SANCTUARY EXTERIOR ELEVATIONS	E1.2A	BALCONY FLOOR PLAN - LIGHTING (ALT. 1)
A4.3	CHAPEL, GARAGE AND COVERED PARKING EXTERIOR ELEVATIONS	E2.1	FIRST FLOOR PLAN - POWER
A5.1	BUILDING SECTIONS	E2.2	BALCONY FLOOR PLAN - POWER
A5.2	BUILDING SECTIONS	E2.2A	BALCONY FLOOR PLAN - POWER (ALT. 1)
A5.3	BUILDING SECTIONS	E2.3	ROOF PLAN - ELECTRICAL
A5.4	PARTIAL BUILDING SECTIONS	E3.1	FIRST FLOOR PLAN - SPECIAL SYSTEMS
A5.5	BUILDING SECTIONS - ALT 1	E3.2	BALCONY FLOOR PLAN - SPECIAL SYSTEMS (ALT. 1)
A5.6	BUILDING SECTIONS - ALT 1	E3.2A	BALCONY FLOOR PLAN - SPECIAL SYSTEMS (ALT. 1)
A5.7	PARTIAL BUILDING SECTIONS - ALT 1	E4.0	GARAGE FLOOR PLANS - POWER & LIGHTING
A6.1	INTERIOR ELEVATIONS	E4.1	CHAPEL FLOOR PLANS - POWER, LIGHTING & SPECIAL SYSTEMS
A6.2	INTERIOR ELEVATIONS	E5.0	ELECTRICAL RISER DIAGRAM
A6.3	INTERIOR ELEVATIONS	E6.0	PANEL DIAGRAMS
A7.1	WALL SECTIONS	E6.1	PANEL DIAGRAMS & SCHEDULES
A7.2	WALL SECTIONS	P1.1	PLUMBING FLOOR PLAN - WASTE & VENT
A7.3	WALL SECTIONS	P1.2	PLUMBING FLOOR PLAN - WATER
A7.4	WALL SECTIONS	P1.3	ENLARGED FLOOR PLANS - PLUMBING
A7.5	WALL SECTION & WINDOW/DOOR DETAILS	P1.4	PLUMBING FLOOR PLANS - CHAPEL BLDG.
A7.6	LADDER ELEVATIONS AND DETAILS	P2.1	PLUMBING RISERS
A8.11	SANCTUARY REFLECTIVE CEILING PLAN - MAIN LEVEL	P2.2	PLUMBING SCHEDULES & DETAILS
A8.12	SANCTUARY REFLECTIVE CEILING PLAN - UPPER LEVEL	P2.2	PLUMBING SCHEDULES & DETAILS - CHAPEL BLDG.
A8.13	SANCTUARY REFLECTIVE CEILING PLAN - MAIN LEVEL ALTERNATE 1	LANDSCAPING	
A8.14	SANCTUARY REFLECTIVE CEILING PLAN - UPPER LEVEL ALTERNATE 1	L1	LANDSCAPE PLAN
A8.21	SANCTUARY FLOOR FINISH PLAN - MAIN LEVEL	L2	LANDSCAPE PLAN
A8.22	SANCTUARY FLOOR FINISH PLAN - UPPER LEVEL	L3	IRRIGATION PLAN
A8.23	SANCTUARY FLOOR FINISH PLAN - MAIN LEVEL ALTERNATE 1	L4	IRRIGATION PLAN
A8.24	SANCTUARY FLOOR FINISH PLAN - UPPER LEVEL ALTERNATE 1	FIRE	
A8.30	CHAPEL & GARAGE REFLECTIVE CEILING AND FLOOR FINISH PLANS	F1.0	FIRE PROTECTION SITE PLAN - PHASE 1
A9.1	SCHEDULES	F2.1	FIRE CONTROL SYSTEMS - FLOOR PLAN - MAIN LEVEL
A9.2	WINDOW AND DOOR DETAILS	F2.2	FIRE CONTROL SYSTEMS - FLOOR PLAN - UPPER LEVEL
		F2.3	FIRE CONTROL SYSTEMS - ROOF PLAN
		F3.1	FIRE EGRESS INFORMATION - FLOOR PLAN - MAIN LEVEL
		F3.2	FIRE EGRESS INFORMATION - FLOOR PLAN - UPPER LEVEL
		F3.3	FIRE EGRESS INFORMATION - FLOOR PLANS - ALTERNATE 1
		F4.1	FIRE CONTROL SYSTEMS & EGRESS INFORMATION - CHAPEL & GARAGE

PROJECT DATA	
BUILDING CODE:	INTERNATIONAL BUILDING CODE, 2006 EDITION IBC
FIRE CODE:	INTERNATIONAL FIRE CODE, 2006 EDITION IFC
MECHANICAL CODE:	INTERNATIONAL MECHANICAL CODE, 2006 EDITION IMC
PLUMBING CODE:	INTERNATIONAL PLUMBING CODE, 2006 EDITION IPC
ELECTRICAL CODE:	NATIONAL ELECTRICAL CODE, 2006 EDITION NEC
ACCESSIBILITY CODE:	TEXAS ACCESSIBILITY STANDARDS (TAS APRIL 1994) & THE AMERICAN WITH DISABILITIES ACT (ANSI) 17.1-1992
ENERGY CODE:	INTERNATIONAL ENERGY CONSERVATION CODE, 2006 EDITION
FIRE PROTECTION CODE:	NATIONAL FIRE PROTECTION ASSOCIATION STANDARD (NFPA) 2006
ALL CODES HAVE LOCAL AMENDMENTS	
CONSTRUCTION TYPE:	V-B
OCCUPANCY TYPE:	A-3
OCCUPANCY SEPARATION:	NONE REQUIRED
AREA SEPARATION:	1 HOUR
GROSS SQUARE FOOTAGE:	24,702.8 TOTAL



TIMBERCON  
CONSTRUCTION, INC.

1241 UNIVERSAL CITY BLVD.  
UNIVERSAL CITY, TEXAS 78148

(210) 590-2544

FAX (210) 590-2352

www.timbercon.net

These drawings and accompanying specifications are the sole property of Timbercon Construction, Inc. and may not be used for any other project or by any other person or general contractor without prior written permission from Timbercon Construction, Inc.

JULY 28, 2010

DEFINITIONS:

1. GENERAL CONTRACTOR SHALL BE DEFINED AS TIMBERCON CONSTRUCTION, INC.
2. SUBCONTRACTOR SHALL BE DEFINED AS CONTRACTOR.

GENERAL NOTES:

1. VERIFICATION OF ALL EXISTING CONDITIONS ARE THE RESPONSIBILITY OF THE CONTRACTOR.
2. ALL DIMENSIONS ARE TO FACE OF STUD FRAMING UNLESS NOTED OTHERWISE (U.N.O.).
3. REFER TO SCHEDULES FOR FINISHES AND DOOR TYPES.
4. FOR LIGHT LEGEND AND SCHEDULE, SEE ELECTRICAL DRAWINGS.
5. START CEILING SYSTEM GRID IN THE CENTER OF THE SPACE (U.N.O.).

GENERAL SUMMARY OF WORK:

1. DESCRIPTION OF WORK: UNLESS OTHERWISE SPECIFIED, THE CONTRACTORS SHALL SUPPLY ALL LABOR, TRANSPORTATION, MATERIALS, APPARATUS, FUEL, LIGHT, WATER, SCAFFOLDING, AND TOOLS NECESSARY FOR THE ENTIRE PROPER AND SUBSTANTIAL COMPLETION OF THE WORK, ENTITLED TRUE VISION CHURCH — NEW MULTI-PURPOSE FACILITY AND CHAPEL. THE CONTRACTORS MUST MAINTAIN AND REMOVE ALL EQUIPMENT OF CONSTRUCTION AND OTHER UTENSILS, AND BE RESPONSIBLE FOR LAWFUL CONSTRUCTION AND USE OF THE SAME. THE CONTRACTORS SHALL CONSTRUCT, COMPLETE, IN AN EXCELLENT AND WORKMANLIKE MANNER, READY FOR OCCUPANCY AND USE, THE BUILDING AND ALL APPURTENANCES, INCLUSIVE OF ALL ITEMS INCIDENTAL THERETO, AS SHOWN ON THE DRAWINGS, STATED IN THE SPECIFICATIONS, OR REASONABLY IMPLIED BY EITHER, IN STRICT ACCORDANCE WITH THE CONTRACT DOCUMENTS.

2. PERMITS: APPLY FOR, OBTAIN, AND PAY FOR PERMITS REQUIRED TO PERFORM THE WORK. SUBMIT COPIES TO TIMBERCON CONSTRUCTION.
3. CODES: COMPLY WITH APPLICABLE CODES AND REGULATIONS OF AUTHORITIES HAVING JURISDICTION. SUBMIT COPIES OF INSPECTION REPORTS, NOTICES AND SIMILAR COMMUNICATIONS TO TIMBERCON CONSTRUCTION.

4. TESTING: AN INDEPENDENT TESTING FIRM WILL BE HIRED TO PROVIDE STRUCTURAL TESTING AS SPECIFIED FOR CONCRETE AND STRUCTURAL FILL AND STRUCTURAL STEEL. REFER TO STRUCTURAL NOTES FOR TESTING SCHEDULE. ADDITIONAL TESTING REQUIRED WHEN TEST RESULTS INDICATE SPECIFIED STRUCTURAL CHARACTERISTICS HAVE NOT BEEN ATTAINED WILL BE AT CONTRACTOR'S EXPENSE. COORDINATE WITH TIMBERCON CONSTRUCTION AND TESTING SERVICE.

5. DIMENSIONS: VERIFY DIMENSIONS INDICATED ON DRAWINGS WITH ACTUAL FIELD DIMENSIONS BEFORE FABRICATION OR ORDERING OF MATERIALS. DO NOT SCALE DRAWINGS.

6. EXISTING CONDITIONS: VERIFY EXISTING CONDITIONS BEFORE STARTING WORK. NOTIFY TIMBERCON CONSTRUCTION IN WRITING OF EXISTING CONDITIONS DIFFERING FROM THOSE INDICATED ON THE DRAWINGS.

7. DEFINITIONS FOR TERMS USED IN THE SPECIFICATIONS:
  - A. PROVIDE: FURNISH AND INSTALL. COMPLETE WITH ALL NECESSARY ACCESSORIES, READY FOR INTENDED USE. PAY FOR ALL RELATED COSTS.
  - B. APPROVED: ACCEPTANCE OF ITEM SUBMITTED FOR APPROVAL. NOT A LIMITATION OR RELEASE FOR COMPLIANCE WITH THE CONTRACT DOCUMENTS OR REGULATORY REQUIREMENTS.

8. INTENT: DRAWINGS AND SPECIFICATIONS ARE INTENDED TO PROVIDE THE BASIS FOR PROPER COMPLETION OF THE WORK SUITABLE FOR THE INTENDED USE OF THE OWNER. ANYTHING NOT EXPRESSLY SET FORTH BUT WHICH IS REASONABLY IMPLIED OR NECESSARY FOR PROPER PERFORMANCE OF THE PROJECT SHALL BE INCLUDED. IN THE EVENT OF CONFLICT BETWEEN THE SPECIFICATIONS AND DRAWINGS, THE DRAWINGS TAKE PRECEDENCE.

9. APPLICATION FOR PAYMENT: THE OWNER SHALL MAKE PAYMENT FOR THE WORK MONTHLY. IT SHALL BE BASED ON APPROVED REQUEST FOR PAYMENT SUBMITTED TO THE OWNER BY TIMBERCON CONSTRUCTION ON STANDARD A.I.A. FORM 702 AND G 702A. THE REQUEST SHALL BE FOR ONLY MATERIAL AND LABOR PROPERLY INCORPORATED IN THE WORK AND MATERIAL SUITABLY STORED ON SITE. MATERIALS AND/OR EQUIPMENT STORED OFF-SITE SHALL NOT BE INCLUDED IN ANY REQUEST FOR PAYMENT UNLESS DOCUMENTATION IS SUBMITTED THAT VERIFIES THE ITEM IS INSURED AND IS ASSIGNED EXCLUSIVELY AS PROPERTY OF THE OWNER. THE REQUEST SHALL BE SUBMITTED ON THE TWENTY-FIFTH DAY OF EACH MONTH FOR PERCENTAGE OF WORK COMPLETED UP TO THE TWENTY-FIFTH DAY OF THE MONTH. A CERTIFICATE OF SUBSTANTIAL COMPLETION SHALL BE ISSUED TO THE CONTRACTORS WHEN THE WORK IS SUFFICIENTLY COMPLETE FOR THE OWNER TO USE THE FACILITY FOR ITS INTENDED PURPOSE. UPON RECEIPT OF THIS CERTIFICATE, 90% OF THE CONTRACT SUM IS DUE LESS THE COST OF THE ITEMS REMAINING INCOMPLETE. THE FINAL PAYMENT INCLUDING ALL RETAINAGE PROGRESSIVELY WITHHELD THROUGH OUT THE TERM OF THE PROJECT, SHALL BE MADE THIRTY (30) DAYS AFTER ALL WORK HAS BEEN COMPLETED. THIS PROJECT IS TAX EXEMPT.

10. CHANGE ORDERS: ANY CHANGES IN THE WORK OF THE CONTRACT SHALL BE DOCUMENTED AND SUBMITTED IN WRITING TO TIMBERCON CONSTRUCTION FOR APPROVAL. REQUEST MUST BE SIGNED BY A CORPORATE OFFICER OF TIMBERCON CONSTRUCTION TO BE VALID. NO CHANGE IN WORK SHOULD COMMENCE UNTIL APPROVAL IN WRITING HAS BEEN RECEIVED. NO PAYMENT WILL BE MADE ON ANY CHANGES OR MODIFICATIONS OF WORK THAT HAVE NOT BEEN PROPERLY APPROVED AND SIGNED.

11. LIEN WAIVERS, RELEASES, AND RECEIPTS: THE OWNER RESERVES THE RIGHT TO DEMAND AND RECEIVE CLEAR LIEN WAIVERS, RELEASE OF LIENS, AND/OR RECEIPTED BILLS FROM ALL PARTIES WHO MAY HAVE A LIENABLE CLAIM ON THE INVOLVED PROPERTY OF THE OWNER. IF THE CONTRACTOR FAILS TO FURNISH EVIDENCE OF PAYMENT UPON REQUEST, THE OWNER SHALL HAVE NO OBLIGATION TO MAKE FURTHER PAYMENTS ON THAT PART OF THE WORK INVOLVING THE LIENABLE CLAIM UNTIL THE SAME IS FURNISHED.

TEMPORARY FACILITIES:

1. PROVIDE TEMPORARY SERVICES AND UTILITIES, INCLUDING UTILITY COSTS:
  - WATER
  - LIGHTING AND POWER
  - METERING
  - TELEPHONE OR OTHER MEANS OF COMMUNICATION AT THE JOB SITE.
  - PORTABLE TOILET FACILITIES
  - MATERIALS STORAGE
2. PROVIDE CONSTRUCTION FACILITIES, INCLUDING UTILITY COSTS:
  - CONSTRUCTION EQUIPMENT
  - DEWATERING AND PUMPING, AS REQUIRED.
  - ACCESS.
3. PROVIDE SECURITY AND PROTECTIONS REQUIREMENTS:
  - FIRE EXTINGUISHERS
  - ALL ITEMS INTENDED FOR INSTALLATION ON THE PROJECT.
  - ENVIRONMENTAL PROTECTION.
4. PROVIDE PERSONNEL SUPPORT FACILITIES:
  - CONTRACTOR'S FIELD OFFICE
  - SANITARY FACILITIES
  - CLEANING AND TRASH REMOVAL

PROJECT COORDINATION:

1. COORDINATION: COORDINATE VARIOUS ELEMENTS OF THE WORK AND ENTITIES ENGAGED TO PERFORM WORK AND COORDINATE THE WORK WITH EXISTING FACILITIES/CONDITIONS, AND WITH THE WORK DONE BY SEPARATE CONTRACTORS.
2. INSTALLER INSPECTIONS: INSTALLER OF EACH MAJOR UNIT OF WORK TO INSPECT SUBSTRATE AND CONDITIONS FOR INSTALLATION AND TO REPORT UNSATISFACTORY CONDITIONS. CORRECT UNSATISFACTORY CONDITIONS BEFORE PROCEEDING. INSPECT EACH PRODUCT IMMEDIATELY BEFORE INSTALLATION. DO NOT INSTALL DAMAGED OR DEFECTIVE PRODUCTS, MATERIALS OR EQUIPMENT.
3. COMPLY WITH MANUFACTURER'S INSTRUCTIONS AND RECOMMENDATIONS TO EXTENT PRINTED INFORMATION IS MORE DETAILED OR STRINGENT THAN REQUIREMENT CONTAINED DIRECTLY IN CONTRACT DOCUMENTS.
4. TIMING: INSTALL WORK DURING TIME AND UNDER CONDITIONS WHICH WILL ENSURE BEST POSSIBLE RESULTS, COORDINATED WITH REQUIRED INSPECTION AND TESTING.
5. ANCHOR WORK SECURELY IN PLACE, PROPERLY LOCATED BY MEASURED LINE AND LEVEL, ORGANIZED FOR BEST POSSIBLE UNIFORMITY, VISUAL EFFECT, OPERATIONAL EFFICIENCY, DURABILITY, AND SIMILAR BENEFIT TO OWNER'S USE. ISOLATE NON-COMPATIBLE MATERIALS FROM CONTACT, SUFFICIENTLY TO PREVENT DETERIORATION.
6. CLEANING AND PROTECTION: CLEAN EACH ELEMENT OF WORK AT TIME OF INSTALLATION. PROVIDE SUFFICIENT MAINTENANCE AND PROTECTION DURING CONSTRUCTION TO ENSURE FREEDOM FROM DAMAGE AND DETERIORATION AT TIME OF SUBSTANTIAL COMPLETION.

DEMOLITION NOTES:

1. UTILITIES TO COORDINATE SHALL INCLUDE BUT NOT LIMITED TO THE FOLLOWING:
  - A. ELECTRICAL
  - B. WATER
  - C. SEWER
  - D. STORM WATER
  - E. SAWS WATER AND SEWER
2. PROTECT EXISTING WIRING, CONDUIT, BOXES AND FIXTURES DURING DEMOLITION AND CONSTRUCTION.
3. PROTECT WATER LINES AND SEWER LINES DURING DEMOLITION AND CONSTRUCTION.
4. ALL REMOVED MATERIAL INDICATED TO BE SALVAGED AND REUSED SHALL BE STORED AND PROTECTED IN AN APPROPRIATE MANNER UNTIL REINSTALLED.
5. ALL DEMOLITION SHALL BE EXECUTED WITH CARE TO PROTECT THE SITE FROM DANGER.
6. SUBCONTRACTOR SHALL BARRICADE WORK AS SPECIFIED AND PROVIDE A CLEAN SITE FREE OF OBSTACLES.
7. FILL ALL HOLES AND DISTURBANCES CREATED DURING DEMOLITION PROCESS WITH AN APPROVED TOPSOIL. ROLL TO LEVEL GRADE AND HYDROSEED AS PER SPECIFICATIONS.

ACCESSIBILITY REQUIREMENT NOTES:

1. ALL CONSTRUCTION AS PART OF THIS PROJECT SHALL BE COMPLETED IN STRICT ACCORDANCE WITH THE GUIDELINES ESTABLISHED BY THE AMERICANS WITH DISABILITIES ACT (ADA) AND THE TEXAS ACCESSIBILITY STANDARDS (TAS).
2. THE CONTRACTOR SHALL REPORT TO TIMBERCON CONSTRUCTION ANY AND ALL DISCREPANCIES BETWEEN OR WITHIN THE CONTRACT DOCUMENTS AND THE DESIGN GUIDELINES ESTABLISHED BY THE ADA AND THE TAS PRIOR TO BEGINNING ANY PHASE OF CONSTRUCTION.
3. THE CONTRACTOR SHALL UTILIZE EXTREME CARE TO INSURE THAT ALL TOLERANCES, DIMENSIONS AND CLEARANCES ARE CONSTRUCTED ACCURATELY AND WITHOUT DEVIATION.
4. THE CONTRACTOR IS REQUIRED TO TAKE ANY AND ALL ACTIONS NECESSARY TO CORRECT CONDITIONS WHICH ARE, IN THE OPINION OF THE STATE ACCESSIBILITY INSPECTOR, IN VIOLATION OF TAS GUIDELINES AS THE DIRECT RESULT OF DEVIATIONS FROM THE CONSTRUCTION DOCUMENTS OR INADEQUATE CONSTRUCTION CONTROL AND/OR TOLERANCES.

CONTRACT CLOSE-OUT:

1. THE FOLLOWING ARE PREREQUISITES TO SUBSTANTIAL COMPLETION. PROVIDE THE FOLLOWING:
  - PUNCH LIST
  - SUPPORTING DOCUMENTATION
  - WARRANTIES
  - CERTIFICATIONS
  - OCCUPANCY PERMIT
  - STARTUP AND TESTING OF BUILDING SYSTEMS
2. PROVIDE THE FOLLOWING PREREQUISITES TO FINAL ACCEPTANCE:
  - FINAL PAYMENT REQUEST WITH SUPPORTING AFFIDAVITS
  - COMPLETED PUNCH LIST
3. PROVIDE A MARKED-UP SET OF RECORD DRAWINGS AND PROJECT MANUAL INCLUDING CHANGES WHICH OCCURRED DURING CONSTRUCTION (AS-BUILTS).
4. PROVIDE THE FOLLOWING CLOSE-OUT PROCEDURES:
  - SUBMISSION OF RECORD DOCUMENTS
  - SUBMISSION OF MAINTENANCE MANUALS
  - REVIEW OF SYSTEMS AND OPERATING INSTRUCTION WITH OWNER PRIOR TO TURNOVER TO OWNER
  - FINAL CLEANING AND TOUCH UP
  - REMOVAL OF TEMPORARY FACILITIES
5. REMOVE FROM THE SITE ALL EXCESS MATERIALS AND DEBRIS RESULTING FROM WORK UNDER THIS SECTION. IF DEBRIS IS DISPOSED OF IN CONSTRUCTION DUMPSTER, ALL BOXES, ETC. MUST BE BROKEN DOWN.
6. REPAIR ANY DAMAGE TO THE BUILDING OR GROUNDS, RESULTING FROM THESE OPERATIONS, TO THE OWNER'S SATISFACTION.

PRODUCTS AND SUBSTITUTIONS:

1. PROVIDE PRODUCTS FROM ONE MANUFACTURER FOR EACH TYPE OR KIND AS APPLICABLE. PROVIDE SECONDARY MATERIALS AS RECOMMENDED BY MANUFACTURERS OF PRIMARY MATERIALS.
2. PROVIDE PRODUCTS SELECTED OR APPROVED EQUAL. PRODUCTS SUBMITTED FOR SUBSTITUTION SHALL BE SUBMITTED WITH ACCEPTABLE DOCUMENTATION, AND INCLUDE COSTS OF SUBSTITUTION INCLUDING RELATED WORK. ALL SUBSTITUTIONS SHALL BE DOCUMENTED AND SUBMITTED IN WRITING.
3. CONDITIONS FOR SUBSTITUTION INCLUDE:
  - A. AN "OR EQUAL" PHRASE IN THE SPECIFICATIONS
  - B. SPECIFIED MATERIAL CANNOT BE COORDINATED WITH OTHER WORK
  - C. SPECIFIED MATERIAL IS NOT ACCEPTABLE TO AUTHORITIES HAVING JURISDICTION.
  - D. SUBSTANTIAL ADVANTAGE IS OFFERED OWNER IN TERMS OF COST, TIME, OR OTHER VALUABLE CONSIDERATION.
4. SUBSTITUTIONS SHALL BE SUBMITTED PRIOR TO AWARD OF CONTRACT, UNLESS OTHERWISE ACCEPTABLE. APPROVAL OF SHOP DRAWINGS, PRODUCT DATA, OR SAMPLES IS NOT A SUBSTITUTION APPROVAL UNLESS CLEARLY PRESENTED AS A SUBSTITUTION AT THE TIME OF SUBMITTAL.
5. COMPLY WITH GOVERNING CODES AND REGULATIONS. PROVIDE PRODUCTS OF ACCEPTABLE MANUFACTURER WHICH HAVE BEEN IN SATISFACTORY USE IN SIMILAR SERVICE FOR THREE YEARS. USE EXPERIENCE INSTALLERS. DELIVER, HANDLE AND STORE MATERIALS IN ACCORDANCE WITH MANUFACTURER'S INSTRUCTIONS.
6. DELIVERY OF PRODUCTS: DELIVER MATERIALS TO JOB SITE IN MANUFACTURER'S ORIGINAL UNOPENED CONTAINERS WITH MANUFACTURER'S NAME AND BRAND CLEARLY MARKED THEREON.
7. STORE MATERIALS OFF GROUND AND PROTECT AGAINST WEATHER, CONDENSATION AND DAMAGE. REMOVE DAMAGED MATERIALS FROM SITE.

REFLECTIVE CEILING PLAN GENERAL NOTES:

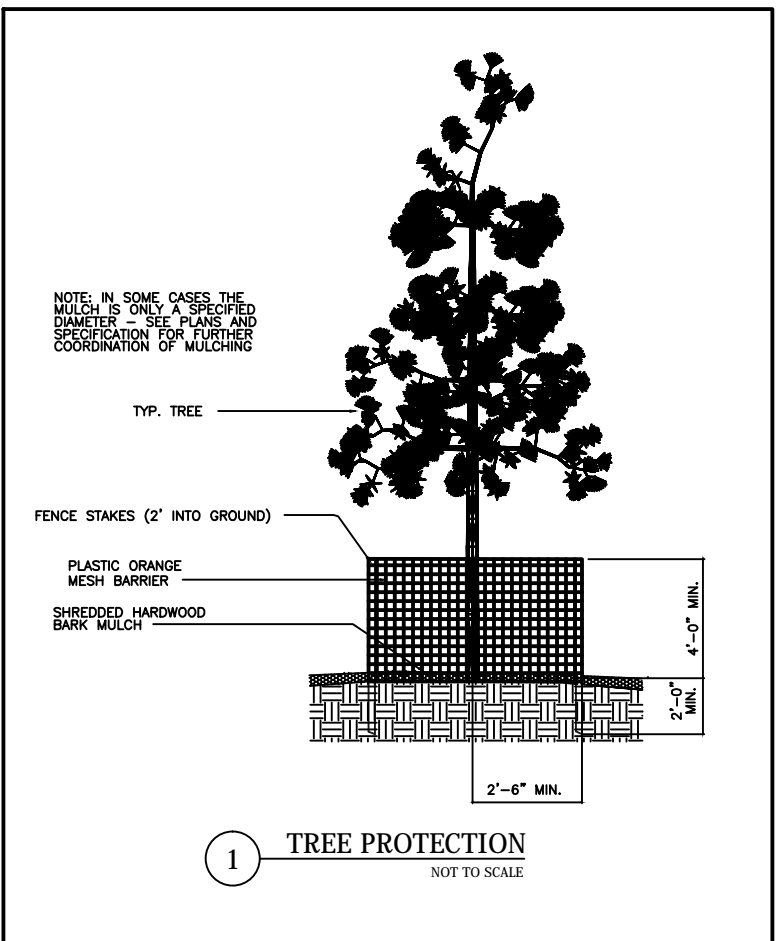
1. ANY CONFLICTS BETWEEN BASE BUILDING SYSTEMS AND LIGHTS ARE TO BE BROUGHT TO THE ATTENTION OF TIMBERCON CONSTRUCTION PRIOR TO INSTALLATION.
2. CONTRACTOR TO VERIFY ALL RECESS DEPTHS OF FIXTURES AGAINST HVAC DUCTS, PIPES, BAR JOISTS, ETC. AND NOTIFY ARCHITECT OF ANY CONFLICTS.
3. REFER TO ELEVATIONS FOR FURR DOWN LOCATIONS. COORDINATE EXACT WIDTH OF FURR DOWNS WITH MILL WORKERS SHOP DRAWINGS. FURR DOWN TO ALIGN WITH END OF UPPER CABINETS ON FINAL DRAWINGS.
4. CONTRACTOR TO INSPECT DURING BIDDING PROCESS FOR ROOF LEAKS AND/OR DAMAGE TO EXISTING CEILINGS, LIGHT FIXTURES, ETC. AND PROVIDE SEPARATE PRICING FOR REPAIRS.
5. CONNECT UNDER COUNTER LIGHTS TO SWITCH LEFT FOR INDIVIDUAL ROOMS.
6. FIRE ALARM PULLS AND SMOKE DETECTORS TO BE LOCATED BY LOCAL CODE/AUTHORITY.
7. CEILING HEIGHT IS 9' ABOVE FINISH FLOOR (AFF) UNLESS NOTED OTHERWISE (U.N.O.).
8. DOWN LIGHTS TO BE CENTERED IN CEILING TILE U.N.O.
9. CONTRACTOR TO PROVIDE AND INSTALL LIGHT FIXTURES. REFER TO MEP'S FOR SPECS.

CLEANING AND PROTECTION:

1. DISPOSE OF EXCESS MATERIALS AND REMOVE DEBRIS FROM SITE.
2. CLEAN WORK IN ACCORDANCE WITH MANUFACTURER'S RECOMMENDATIONS.
3. PROTECT WORK AGAINST DAMAGE UNTIL FINAL ACCEPTANCE. REPLACE OR REPAIR TO THE SATISFACTION OF TIMBERCON CONSTRUCTION AND OWNER, ANY WORK THAT BECOMES DAMAGED PRIOR TO FINAL ACCEPTANCE.
4. TOUCH UP MINOR SCRATCHES AND ABRASIONS WITH TOUCH UP PAINT OR AS RECOMMENDED BY COATING MANUFACTURER FOR FIELD APPLICATION.
5. DO NOT ALLOW PANELS OR TRIM TO COME IN CONTACT WITH DISSIMILAR METALS SUCH AS COPPER, LEAD OR GRAPHITE. WATER RUN-OFF FROM THESE MATERIALS IS ALSO PROHIBITED. THIS SPECIFICALLY INCLUDES CONDENSATE FROM ROOF TOP A/C UNITS.
6. PROTECT FINISHED ALUMINUM SURFACES WITH WRAPPING. DO NOT USE ADHESIVE PAPERS OR SPRAYED COATINGS WHICH BOND TO ALUMINUM WHEN EXPOSED TO SUNLIGHT OR WEATHER.
7. STORE MATERIALS IN A DRY PROTECTED AREA. PROTECT AND HANDLE MATERIALS IN ACCORDANCE WITH MANUFACTURER'S RECOMMENDATIONS TO PREVENT DAMAGE, SOILING, OR DETERIORATION.

TREE PROTECTION NOTES:

1. EXISTING TREES WITHIN THE LIMITS OF CONSTRUCTION (L.O.C.) ARE TO BE PRESERVED UNLESS OTHERWISE INDICATED. THE CONTRACTOR IS TO STAKE THE PROPOSED IMPROVEMENTS FOR REVIEW BY THE LANDSCAPE ARCHITECT. TREES TO REMAIN SHALL BE PROTECTED AS NOTED BELOW. EXISTING TREES, OUTSIDE THE L.O.C., ARE TO BE PRESERVED FROM ANY DAMAGE BY THE CONTRACTOR. ANY TREES DAMAGED BY THE CONTRACTOR WILL BE REPLACED AS DETERMINED BY THE LANDSCAPE ARCHITECT.
2. ORANGE MESH BARRIER FENCE SHALL BE ERECTED AT THE L.O.C. AND MAINTAINED UNTIL CONSTRUCTION IS COMPLETED. THE FENCING WILL ALSO BE ERECTED ABOUT THE ROOT PROTECTION ZONE (RPZ) OF TREES THAT ARE TO REMAIN WITHIN THE L.O.C. THE RPZ SHALL BE DETERMINED BY THE TREE TRUNK SIZE (RECOMMENDED 6" RADIUS FROM THE TRUNK FOR EVERY 1" DIAMETER OF TRUNK AT 6" ABOVE GROUND) WITH A MINIMUM OF 30" RADIUS. FENCE TREE GROUPINGS WHERE POSSIBLE (REFER TO DETAIL 1)



3. RPZ SHALL BE SUSTAINED IN A NATURAL STATE AND SHALL BE FREE FROM VEHICULAR OR MECHANICAL TRAFFIC. NO FILL EQUIPMENT, LIQUIDS OR CONSTRUCTION DEBRIS SHALL BE PLACED INSIDE THE PROTECTIVE BARRIER.
4. THE RPZ SHALL BE COVERED WITH MULCH TO REDUCE MOISTURE STRESS (REFER TO DETAIL 1 BELOW).
5. ANY DAMAGE DONE TO EXISTING TREES CROWNS OR ROOT SYSTEMS SHALL BE REPAIRED IMMEDIATELY. ALL WOUNDS TO LIVE OAKS WILL BE PAINTED WITH PRUNING PAINT WITHIN MINUTES AFTER DAMAGE. ROOTS EXPOSED DURING CONSTRUCTION OPERATIONS WILL BE CUT CLEANLY.
6. THE PROPOSED FINISH GRADE AND ELEVATION OF LAND WITHIN THE RPZ OF ANY TREE TO BE PRESERVED SHALL NOT BE RAISED OR LOWERED MORE THAN 3" WELLING AND RETAINING METHODS ARE ALLOWED OUTSIDE THE RPZ.
7. THE RPZ SHALL REMAIN PERVIOUS, I.E. GROUND COVER OR TURF AT COMPLETION OF LANDSCAPE DESIGN.

SITE PLAN GENERAL NOTES:

1. COMPLY WITH TEXAS DEPARTMENT OF HEALTH AND PUBLIC SAFETY SPECIFICATIONS, CITY OF KIRBY, OR TEXAS HIGHWAY DEPARTMENT STANDARDS FOR CONSTRUCTION OF ALL DRIVEWAYS IN STREET RIGHT-OF-WAY.
2. SPECIAL CARE SHALL BE TAKEN WITH NEW CONSTRUCTION ALONG ADJACENT PROPERTY LINES. ADJACENT PROPERTY IS ALTERED ONLY AS SPECIFICALLY REQUIRED IN THESE DRAWINGS AND SPECIFICATIONS, AND RESTORED TO ORIGINAL CONDITION BY CONTRACTOR IF ANY DAMAGE OCCURS.
3. REFER TO CIVIL, PLUMBING AND ELECTRICAL DRAWINGS FOR ALL UTILITY SERVICES TO AND ON THIS SITE.
4. REPAIR ALL LANDSCAPING AND GRASS AREAS DAMAGED BY CONSTRUCTION. BACK FILL WITH TOP SOIL AND GRASS PER LANDSCAPE SPECIFICATIONS.
5. ACCESSIBLE PARKING SPACES SHOWN ON THE SITE PLAN ARE DESIGNATED BY ABOVE GRADE SIGN AT EACH SPACE PER STATE AND LOCAL APPLICABLE CODES AND STANDARDS. MANEUVERING SPACE BETWEEN EACH TO HAVE 4" WIDE PAINTED WHITE STRIPES AT 12" O.C. (OR AS INDICATED BY LOCAL CODES). PROVIDE CONCRETE RAMP AT WALKS AS DESIGNATED ON PLANS.
6. SLOPE ACCESSIBLE RAMPS AT 1:12 MAXIMUM. REFER TO PLANS. SCORE RAMP SURFACE AT 5" O.C. PROVIDE NONSKID FINISH ON ACCESSIBLE AND DELIVERY RAMPS AS REQUIRED.
7. DO NOT RESTRICT ACCESS TO ADJACENT BUILDINGS, SITES, OR ROADWAYS.
8. SET IRRIGATION SLEEVES 24" BELOW GRADE AT PAVED DRIVE OR SIDEWALK AREAS. PROVIDE IRON PINS AT EACH END TO MARK LOCATIONS. SEE LANDSCAPE DRAWINGS FOR ADDITIONAL INFORMATION.
9. PIPES INDICATED AS "ELEC. PVC" ARE FOR FUTURE USE AND STUBBED UP TO 4" TO 6" BELOW FINISH GRADE AND CAPPED. MARK EACH END WITH AN IRON PIN. INSTALL PULL WIRES IN EEC. PVC SLEEVES.
10. SIDEWALKS ARE MIN. 4-½" THICK WITH 6"x6" W2.9/W2.9 WELDED WIRE FABRIC TYPICAL.
11. CONFORM TO THE REQUIREMENTS IN THE CIVIL DRAWINGS RELATED TO THE "POLLUTION PROTECTION PLAN" AND THE EPA'S NATIONAL POLLUTANT DISCHARGE ELIMINATION SYSTEM.
12. OBTAIN AND PAY FOR ALL PERMITS NECESSARY TO PERFORM DEMOLITION WORK WITHIN THE PROPERTY LINE AND IN THE STREET RIGHT-OF-WAY.
13. COORDINATE WITH THE LOCAL UTILITY COMPANIES FOR THE DISCONNECTION AND PLUGGING OF PUBLIC UTILITIES SERVING STRUCTURES TO BE DEMOLISHED.
14. DEMOLITION OF STREET CURBS AS SHOWN ON THIS PLAN AND ON CIVIL DRAWINGS ARE TO BE THE MINIMUM REQUIRED FOR NEW CONSTRUCTION. REPLACE OR REPAIR CURBS REQUIRING DEMOLITION TO FACILITATE NEW CONSTRUCTION.
15. ARRANGE AND PAY FOR RELOCATION OF POWER POLES AND UTILITIES REQUIRING DEMOLITION IN ORDER TO PERFORM NEW CONSTRUCTION.
16. PROVIDE AND MAINTAIN ALL SIGNS AND BARRICADES AND TRAFFIC CONTROL AS REQUIRED BY SAFETY TO ALL PEDESTRIANS, VEHICLES, SURROUNDING BUILDINGS AND UTILITIES THROUGH ALL PHASES OF THE CONSTRUCTION.
17. DAMAGE TO EXISTING SITE OR SURROUNDING IMPROVEMENTS, PUBLIC OR PRIVATE, BY CONTRACTOR ARE TO BE REPAIRED OR REPLACED AT THE CONTRACTORS EXPENSE.
18. PUMP OPEN TRENCHES AT PERIMETER OF EXISTING PAVING OR AROUND NEW CONSTRUCTION FREE OF STANDING WATER AT ALL TIMES.
19. EXISTING CONCRETE PAVING IS TO BE REMOVED, SAW CUT EXISTING PAVING TO LIMITS INDICATED TO A DEPTH OF NOT LESS THAN 2 INCHES. BREAK OUT REMAINING CONCRETE. EXPOSED 18 INCHES OF EXISTING REINFORCING, CUT REINFORCING CLEANLY, SUCH THAT THE REINFORCING IS LEFT IN PLACE WITH THE PAVEMENT TO REMAIN. BEND STEAL OUT OF THE WAY. REMOVE AND DISPOSE OF EXISTING PAVEMENT INDICATED.
20. WHERE EXISTING CONCRETE CURB IS TO BE REMOVED, SAW CUT EXISTING CURB 1-½ INCHES DEEP MIN, AND REMOVE TWO FEET OF EXISTING PAVING FOR NEW CONNECTION.
21. UNLESS OTHERWISE NOTED, PERIMETER LANDSCAPING ABUTTING CURBS ARE TO BE GRADED TO TOP OF CURB. PROVIDE FERTILE, SANDY LOAM FILL TO TOP OF CONCRETE CURB AT ALL AREAS DESIGNATED AS LANDSCAPE AREAS. SEE ALSO LANDSCAPING DRAWINGS.
22. REFER TO PLUMBING OR ELECTRICAL DRAWINGS FOR SPECIFIC INFORMATION AND RELATED DETAILS FOR ALL GAS, POWER, TELEPHONE AND CABLE SLEEVES.

REVISIONS:	
DATE	BY

These drawings and accompanying specifications are the sole property of Timbercon Construction, Inc. and may not be used for any other project or by any other person or general contractor without prior written permission from Timbercon Construction, Inc.

TRUE VISION CHURCH

2808 W. DUNN COAL  
KIRBY, TX 75249  
(210) 590-4460  
(210) 590-2540 FAX  
www.truevisionchurch.org

TIMBERCON CONSTRUCTION, INC.

1241 UNIVERSITY CITY BLVD.  
UNITED STATES, TX 76186  
(210) 590-2544  
(210) 590-2352 FAX  
www.timbercon.net



SHEET NUMBER

01

JULY 28, 2010



THE SPECIFICATIONS ON THIS SHEET SHALL BE USED AS APPLICABLE UNLESS SPECIFICALLY NOTED ELSEWHERE

GENERAL NOTES

- FOR SUBJECT FACILITIES, CONFORMANCE WITH THE TEXAS ACCESSIBILITY STANDARDS (TAS) IS REQUIRED BY THE TEXAS ARCHITECTURAL BARRIERS ACT (ARTICLE 9102, TEXAS CIVIL STATUTES).
- CONTRACTOR SHALL OBTAIN A COPY OF THE PROJECT TEXAS ACCESSIBILITY STANDARDS (TAS) PLAN REVIEW PRIOR TO COMMENCEMENT OF CONSTRUCTION OR AS SOON AS POSSIBLE IF PLAN REVIEW IS PREPARED AFTER COMMENCEMENT OF CONSTRUCTION. TAS PLAN REVIEW MAY BE REQUESTED FROM THE PROJECT DESIGN PROFESSIONAL OR OWNER. CONTRACTOR SHALL REVIEW THE TAS PLAN REVIEW LETTER AND ACCOMPANYING REPORT. IF NON-CONFORMING ELEMENTS PROPOSED ON PLANS ARE CITED CONTRACTOR SHALL COORDINATE CORRECTIVE ACTION WITH THE APPLICABLE PROJECT DESIGN PROFESSIONAL.
- CONTRACTOR SHALL KEEP A COPY OF THE CURRENT TEXAS ACCESSIBILITY STANDARDS AND ALL TECHNICAL MEMORANDUMS ONSITE FOR REFERENCE PURPOSES THROUGHOUT CONSTRUCTION. COPIES OF THE TEXAS ACCESSIBILITY STANDARDS AND TECHNICAL MEMORANDUM MAY BE DOWNLOADED FROM THE TEXAS DEPARTMENT OF LICENSING AND REGULATION VIA THE FOLLOWING METHODS:  
A) TELEPHONE ORDER: (877) 278-0999  
B) INTERNET ORDER: <http://www.license.state.tx.us/ab/tasformsAB040.pdf>  
C) PDF DOWNLOAD: <http://www.license.state.tx.us/ab/tas/tascomp006.pdf>

GROUND AND FLOOR SURFACES

- ANY CHANGE IN LEVEL EXPERIENCED FROM ONE GROUND/FLOOR SURFACE TO AN ADJOINING GROUND/FLOOR SURFACE SHALL BE LIMITED TO 1/4" (OR 1/2" IF BEVELED 1:2).
- THE FOLLOWING CARPET SPECIFICATIONS SHALL BE FOLLOWED:  
A) CARPET OR CARPET TILE SHALL BE SECURELY ATTACHED, HAVE A FIRM CUSHION, PAD, OR BACKING (OR NO CUSHION OR PAD); AND HAVE A LEVEL LOOP, TEXTURED LOOP, LEVEL CUT PILE, OR LEVEL CUT PILE TEXTURE.  
B) CARPET TILE THICKNESS SHALL BE 1/2" OR LESS.  
ALL PROPOSED CARPET FLOOR FINISHES SHALL BE VERIFIED BY THE CONTRACTOR PRIOR TO MATERIAL ORDER OR INSTALLATION IF CARPET IS TO BE PROVIDED BY OWNER FOR CONFORMANCE WITH THE ABOVE CITED SPECIFICATIONS. IF ANY OF THE ABOVE CARPET SPECIFICATIONS ARE NOT MET, CONTRACTOR SHALL CEASE CARPET ORDER AND/OR INSTALLATION WORK AND INFORM ARCHITECT AND OWNER (IN WRITING) THAT PROPOSED CARPET DOES NOT CONFORM TO TAS SECTION 4.3.3.

DRINKING FOUNTAINS

- ALL WALL-POST MOUNTED CANTILEVERED DRINKING FOUNTAIN UNITS SHALL BE MOUNTED WITH THE BOTTOM OF THE ACCESSIBLE EQUIPMENT SHEATH 27" A.F.F.
- ANY CANTILEVERED WALL-POST MOUNTED DRINKING FOUNTAINS PROPOSED PROJECTING INTO WALKS, HALLWAYS, CORRIDORS, PASSAGEWAYS, OR AISLES THAT ARE NOT PROTECTED BY WINGS WALLS OR OTHERWISE RECESSED CONSTITUTE A PROTRUDING OBJECT VIOLATION UNDER TAS SECTION 4.1.1 DUE TO THE 1" SIDE EQUIPMENT SHEATH BEING > 27" A.F.F. IN THESE INSTANCES, CONTRACTOR SHALL USE THE "ALTERNATE ACCESSIBLE SIDE SHEATH" OFFERED BY THE APPROPRIATE DRINKING FOUNTAIN MANUFACTURER. THIS ALTERNATE SHEATH EXTENDS THE TRADITIONAL EQUIPMENT SHEATH KNEE CLEARANCE OF THE DRINKING FOUNTAIN TO 27" A.F.F. TO AVOID A PROTRUDING OBJECT VIOLATION. IF UNAVAILABLE, CONTRACTOR SHALL CONTACT PROJECT DESIGN PROFESSIONAL OR OWNER IMMEDIATELY FOR FURTHER INSTRUCTION.

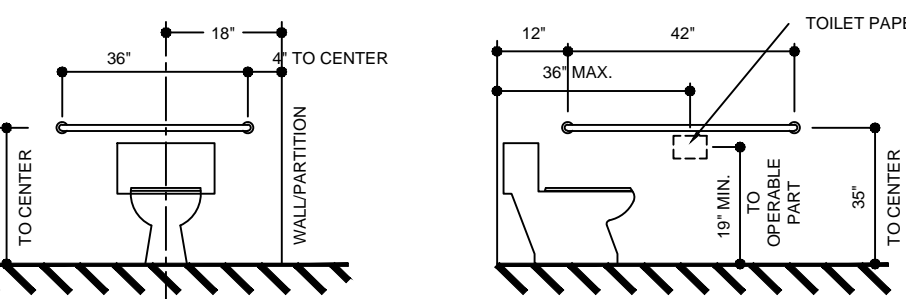
DOOR INSTALLATION

- HANDLES, PULLS, LATCHES, LOCKS, AND OTHER OPERATING DEVICES ON ACCESSIBLE DOORS SHALL HAVE A SHAPE THAT IS EASY TO GRASP WITH ONE HAND AND DOES NOT REQUIRE TIGHT GRASPING, TIGHT PINCHING, OR TWISTING OF THE WRIST TO OPERATE. LEVER-OPERATED MECHANISMS, PUSH-TYPE MECHANISMS, AND U-SHAPED HANDLES ARE ACCEPTABLE DESIGNS.
- WHEN SLIDING DOORS ARE FULLY OPEN, OPERATING HARDWARE SHALL BE EXPOSED AND USABLE FROM BOTH SIDES.
- HARDWARE REQUIRED FOR ACCESSIBLE DOOR PASSAGE SHALL BE MOUNTED NO HIGHER THAN 48" ABOVE FINISHED FLOOR.
- IF A DOOR HAS A CLOSER, THEN THE SWEEP PERIOD OF THE CLOSER SHALL BE ADJUSTED SO THAT FROM AN OPEN POSITION OF 70 DEGREES, THE DOOR WILL TAKE AT LEAST 3 SECONDS TO MOVE TO A POINT 3 INCHES FROM THE LATCH, MEASURED TO THE LEADING EDGE OF THE DOOR.
- THE MAXIMUM FORCE FOR PUSHING OR PULLING OPEN A DOOR SHALL BE AS FOLLOWS:  
(A) FIRE DOORS SHALL HAVE THE MINIMUM OPENING FORCE ALLOWABLE BY THE APPROPRIATE ADMINISTRATIVE AUTHORITY.  
(B) INTERIOR HINGED DOORS: 5 LBS  
(C) SLIDING OR FOLDING DOORS: 5 LBS
- AUTOMATIC DOORS SHALL COMPLY WITH ANSI/BHMA A156.19-1994, SLOWLY OPENING, LOW-POWERED, AUTOMATIC DOORS SHALL COMPLY WITH ANSI A156.19-1994. SUCH DOORS SHALL NOT OPEN TWICE CHECK FASTER THAN 3 SECONDS AND SHALL REQUIRE NO MORE THAN 15 LBF TO STOP DOOR MOVEMENT. IF A POWER-ASSISTED DOOR IS USED, ITS DOOR-OPENING FORCE SHALL COMPLY WITH 4.13.11 AND ITS CLOSING SHALL CONFORM TO THE REQUIREMENTS IN ANSI A156.19-1994. IF USER-OPERATED CONTROLS ARE PROVIDED THEY SHALL COMPLY WITH TEXAS ACCESSIBILITY STANDARDS (TAS) SECTION 4.2.7.

LAVATORIES & MIRRORS

- HOT WATER AND DRAIN PIPES UNDER LAVATORIES SHALL BE INSULATED OR BE OTHERWISE PROTECTED AGAINST CONTACT THRU USE OF AN EQUIPMENT SHEATH. THERE SHALL BE NO SHARP OR ABRASIVE SURFACES UNDER LAVATORIES.
- FAUCETS SHALL BE OPERABLE WITH ONE HAND AND SHALL NOT REQUIRE TIGHT GRASPING, PINCHING, OR TWISTING OF THE WRIST. THE FORCE REQUIRED TO ACTIVATE FAUCET SHALL BE NO GREATER THAN 5 LBF. FAUCETS SHALL EITHER BE LEVER-OPERATED, PUSH-TYPE, OR ELECTRONICALLY CONTROLLED. IF SELF-CLOSING VALVES ARE USED THE FAUCET SHALL REMAIN OPEN FOR AT LEAST 10 SECONDS.
- ACCESSIBLE LAVATORIES (ADULT USE) SHALL BE AN ADA/BARRIER-FREE MANUFACTURER MODEL TYPE AND SHALL BE MOUNTED WITH A RIM HEIGHT OF 34" A.F.F.
- NOTE: BY MOUNTING ADA/BARRIER-FREE MODEL ADULT ACCESSIBLE LAVATORIES 34" MEASURED TO TOP OF RIM A.F.F., THE 29" MINIMUM RIM UP > 27" MINIMUM KNEE CLEARANCE REQUIRED BY TAS WILL BE MET.
- ALL ACCESSIBLE LAVATORY MIRRORS SHALL BE MOUNTED WITH THEIR REFLECTIVE SURFACE (EXCLUDES FRAME) 40" A.F.F. IF ONLY ONE MIRROR IS PRESENT IN A TOILET ROOM AREA (IN A STALL, AT A LAVATORY, OR OTHERWISE), THE TOP REFLECTIVE SURFACE OF THAT LAVATORY MIRROR SHALL EXTEND TO AT LEAST 74" A.F.F.
- NOTE: UNLESS OTHERWISE SPECIFIED, CONTRACTOR SHALL USE BORBICK B-165 (2436) MIRROR OR EQUIVALENT

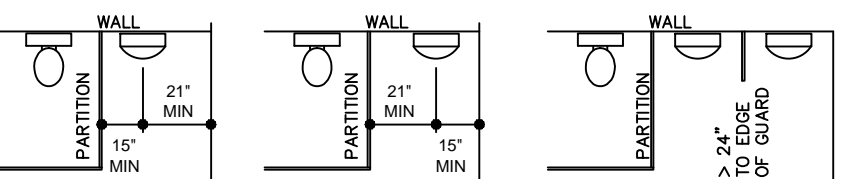
WATER CLOSETS

- ACCESSIBLE WATER CLOSETS (ADULT USE) SHALL BE AN ADA/BARRIER-FREE MANUFACTURER MODEL TYPE WITH INSTALLED SEAT HEIGHTS OF 17" TO 19" MEASURED TOP OF SEAT ABOVE FINISHED FLOOR.
- WATER CLOSET FLUSH VALVES SHALL BE LOCATED ON THE WIDE SIDE (AWAY FROM THE SIDE GRAB BAR). CONTRACTOR SHALL REVIEW PLANS PRIOR TO ORDERING WATER CLOSET FIXTURES TO ENSURE ADEQUATE NUMBER OF RIGHT & LEFT WATER CLOSET TANKS AND/OR REQUIRED PLUMBING IS ORDERED TO MEET THIS REQUIREMENT.
- GRAB BARS FOR ALL WATER CLOSETS (STALL OR OTHERWISE) SHALL BE MOUNTED IN THE FOLLOWING MANNER:  

- UNLESS OTHERWISE SPECIFIED, THE FOLLOWING GRAB BARS MODELS SHALL BE USED:  
BORBICK B-680626 (REAR GRAB BAR) OR EQUIVALENT  
BORBICK B-680642 (SIDE GRAB BAR) OR EQUIVALENT
- CONTRACTOR SHALL LOCATE WATER CLOSET 18" (EXACTLY) FROM THE FINISHED FACE OF SIDE WALL/PARTITION MEASURED TO THE CENTER OF THE WATER CLOSET. CONTRACTOR SHALL COORDINATE WITH PLUMBING SUBCONTRACTOR TO ENSURE WATER CLOSET DRAIN PIPES ARE LOCATED TO ACCOUNT FOR PROPOSED WALL FINISH THICKNESS (GYPSUM BOARD, TILES, ETC.).
- FOR PROPOSED SINGLE OCCUPANCY TOILET ROOMS LESS THAN 6 FT WIDE (CLEAR) WHERE THE LAVATORY IS SHARING THE SAME REAR WALL AS THE WATER CLOSET, THE CONTRACTOR SHALL LOCATE REAR GRAB BAR UP AGAINST THE SIDE WALL TO ENSURE GRAB BAR MOUNTING WILL NOT CONFLICT WITH LAVATORY LOCATION.

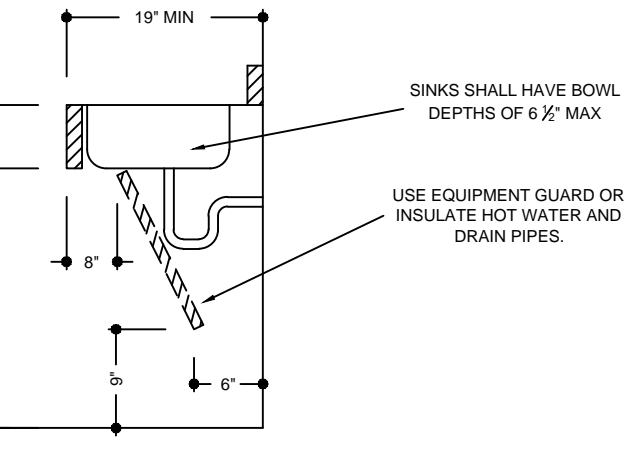
URINALS

- ACCESSIBLE URINALS (ADULT USE) SHALL BE AN ADA/BARRIER-FREE MANUFACTURER MODEL TYPE WITH AN ELONGATED RIM OF 14" MIN AND SHALL BE MOUNTED WITH A RIM HEIGHT OF 17" A.F.F.
- URINAL FLUSH CONTROLS SHALL BE OPERABLE WITH ONE HAND AND SHALL NOT REQUIRE TIGHT GRASPING, PINCHING, OR TWISTING OF THE WRIST. THE FORCE REQUIRED TO ACTIVATE FAUCET SHALL BE NO GREATER THAN 5 LBF. URINAL FLUSH CONTROLS SHALL EITHER BE HAND OPERATED OR AUTOMATIC AND SHALL BE LOCATED < 44" A.F.F.
- URINAL LOCATED IN AN ALCOVE CONDITION > 24" DEEP SHALL PROVIDE 36" OF CLEAR FLOOR SPACE WITHIN THE ALCOVE CONDITION SUCH THAT THE 36"x48" URINAL CLEAR FLOOR SPACE IS CENTERED ON THE URINAL, AND THE REMAINING 6" EXISTS ON ONE SIDE OF SAID CLEAR FLOOR SPACE. FOR EXAMPLE, IF 36" OF CLEARANCE IS PROVIDED, THE URINAL MUST BE OFFSET 15" FROM ONE SIDE TO MEET THIS REQUIREMENT (REF. TAS SECTIONS 4.18.3, 4.2.4.2, AND TAS FIG. 4(E)).

EXAMPLES OF ALCOVE CONDITIONS:



SINKS

- ACCESSIBLE SINKS (ADULT USE) SHALL BE AN ADA/BARRIER-FREE MANUFACTURER MODEL TYPE AND SHALL BE MOUNTED WITH A RIM HEIGHT OF 34" MAX A.F.F.
- HOT WATER AND DRAIN PIPES EXPOSED UNDER SINKS SHALL BE INSULATED OR BE OTHERWISE PROTECTED AGAINST CONTACT THRU USE OF AN EQUIPMENT SHEATH. THERE SHALL BE NO SHARP OR ABRASIVE SURFACES UNDER SINKS.
- FAUCETS SHALL BE OPERABLE WITH ONE HAND AND SHALL NOT REQUIRE TIGHT GRASPING, PINCHING, OR TWISTING OF THE WRIST. THE FORCE REQUIRED TO ACTIVATE FAUCET SHALL BE NO GREATER THAN 5 LBF. FAUCETS SHALL EITHER BE LEVER-OPERATED, PUSH-TYPE, TOUCH-TYPE OR ELECTRONICALLY CONTROLLED.
- SINKS SHALL BE INSTALLED WITH THE TOP OF RIM 34" A.F.F., PROVIDE AT LEAST 27" OF KNEE CLEARANCE, AND CONFORM WITH THE FOLLOWING INSTALLATION SPECIFICATIONS:  


CONTROL AND OPERATING MECHANISMS

CONTROL AND OPERATING MECHANISMS LOCATED IN COMMON USE AREAS SHALL HAVE THE FOLLOWING FEATURES:

- CONTROLS SUCH AS THERMOSTATS, ELECTRICAL AND COMMUNICATION RECEPTACLES, ALARM KEYPADS, ACCESS CARD READERS, ETC. SHALL BE LOCATED SUCH THAT CLEAR FLOOR SPACE COMPLYING WITH 4.2.4 IS PROVIDED (I.E. FORWARD OR SIDE APPROACH USE). CONTROLS AND OPERATING MECHANISMS LOCATED IN ALCOVES DEEPER THAN 24" REQUIRE ADDITIONAL MANEUVERING AREA (SEE TAS FIGURE 4(D) AND 4(E)).
- THE HIGHEST OPERABLE PART OF CONTROLS, DISPENSERS, RECEPTACLES, AND OTHER OPERABLE EQUIPMENT SHALL BE PLACED WITHIN AT LEAST ONE OF THE REACH RANGES SPECIFIED IN 4.2.5 AND 4.2.6. ELECTRICAL AND COMMUNICATIONS SYSTEM RECEPTACLES ON WALLS SHALL BE MOUNTED NO LESS THAN 15" ABOVE THE FLOOR TO THE BOTTOM OF THE DEVICE. EXCEPTION: THESE REQUIREMENTS DO NOT APPLY WHERE THE USE OF SPECIAL EQUIPMENT DICTATES OTHERWISE OR WHERE ELECTRICAL AND COMMUNICATIONS SYSTEMS RECEPTACLES ARE NOT NORMALLY INTENDED FOR USE BY BUILDING OCCUPANTS.
- CONTROLS AND OPERATING MECHANISMS SHALL BE OPERABLE WITH ONE HAND AND SHALL NOT REQUIRE TIGHT GRASPING, PINCHING, OR TWISTING OF THE WRIST. THE FORCE REQUIRED TO ACTIVATE CONTROLS SHALL BE NO GREATER THAN 5 LBF (22.2 N).

HANDRAILS AND GRAB BARS

- ALL HANDRAILS, TOILET BATHING ROOM GRAB BARS, AND TUB AND SHOWER SEATS REQUIRED TO BE ACCESSIBLE SHALL COMPLY WITH THE SPECIFICATIONS THIS SECTION.
- THE NOMINAL DIAMETER OR WIDTH OF THE GRIPPING SURFACES OF A HANDRAIL OR GRAB BAR SHALL BE 1 1/4 INCHES TO 1 1/2 INCHES, OR THE SHAPE SHALL PROVIDE AN EQUIVALENT GRIPPING SURFACE. IF HANDRAILS OR GRAB BARS ARE MOUNTED ADJACENT TO A WALL, THE SPACE BETWEEN THE WALL AND THE GRAB BAR SHALL BE 1-1/2 INCHES (SEE FIG. 39(A), 39(B), 39(C), AND 39(D)). HANDRAILS MAY BE LOCATED IN A RECESS IF THE RECESS IS A MAXIMUM OF 3 INCHES DEEP AND EXTENDS AT LEAST 18 INCHES ABOVE THE TOP OF THE RAIL (SEE FIG. 39(D)).
- THE STRUCTURAL STRENGTH OF GRAB BARS, TUB AND SHOWER SEATS, FASTENERS, AND MOUNTING DEVICES SHALL MEET THE FOLLOWING SPECIFICATION:  
(1) BENDING STRESS IN A GRAB BAR OR SEAT INDUCED BY THE MAXIMUM BENDING MOMENT FROM THE APPLICATION OF 250 LBF SHALL BE LESS THAN THE ALLOWABLE STRESS FOR THE MATERIAL OF THE GRAB BAR OR SEAT.  
(2) SHEAR STRESS INDUCED IN A GRAB BAR OR SEAT BY THE APPLICATION OF 250 LBF SHALL BE LESS THAN THE ALLOWABLE SHEAR STRESS FOR THE MATERIAL OF THE GRAB BAR OR SEAT. IF THE CONNECTION BETWEEN THE GRAB BAR OR SEAT AND ITS MOUNTING BRACKET OR OTHER SUPPORT IS CONSIDERED TO BE FULLY RESTRAINED, THEN DIRECT AND TORSIONAL SHEAR STRESSES SHALL BE TOTALLED FOR THE COMBINED SHEAR STRESS, WHICH SHALL NOT EXCEED THE ALLOWABLE SHEAR STRESS.  
(3) SHEAR FORCE INDUCED IN A FASTENER OR MOUNTING DEVICE FROM THE APPLICATION OF 250 LBF SHALL BE LESS THAN THE ALLOWABLE LATERAL LOAD OR EITHER THE FASTENER OR MOUNTING DEVICE OR THE SUPPORTING STRUCTURE, WHICHEVER IS THE SMALLER ALLOWABLE LOAD.  
(4) TENSILE FORCE INDUCED IN A FASTENER BY A DIRECT TENSION FORCE OF 250 LBF PLUS THE MAXIMUM MOMENT FROM THE APPLICATION OF 250 LBF SHALL BE LESS THAN THE ALLOWABLE WITHDRAWAL LOAD BETWEEN THE FASTENER AND THE SUPPORTING STRUCTURE.  
(5) GRAB BARS SHALL NOT ROTATE WITHIN THEIR FITTINGS.
- A HANDRAIL OR GRAB BAR AND ANY WALL OR OTHER SURFACE ADJACENT TO IT SHALL BE FREE OF ANY SHARP OR ABRASIVE ELEMENTS. EDGES SHALL HAVE A MINIMUM RADIUS OF 1/8 INCHES.

BUILDING SIGNAGE

- SIGNS WHICH DESIGNATE PERMANENT ROOMS AND SPACES SHALL HAVE THE FOLLOWING PROPERTIES:  
(1) LETTERS AND NUMERALS SHALL BE RAISED 1/32 INCH, UPPER CASE, SANS SERIF OR SIMPLE SERIF TYPE AND SHALL BE ACCOMPANIED WITH GRADE 2 BRAILLE. RAISED CHARACTERS SHALL BE AT LEAST 5/8 INCHES HIGH, BUT NO HIGHER THAN 2 INCHES. PICTOGRAMS SHALL BE ACCOMPANIED BY THE EQUIVALENT VERBAL DESCRIPTION PLACED DIRECTLY BELOW THE PICTOGRAM. THE BORDER DIMENSION OF THE PICTOGRAM SHALL BE 6 INCHES MINIMUM IN HEIGHT (SEE FIG. 43).

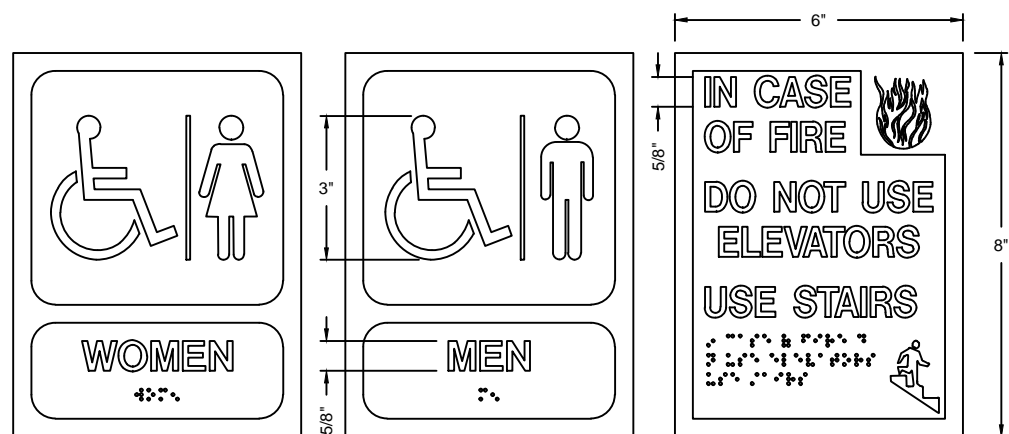
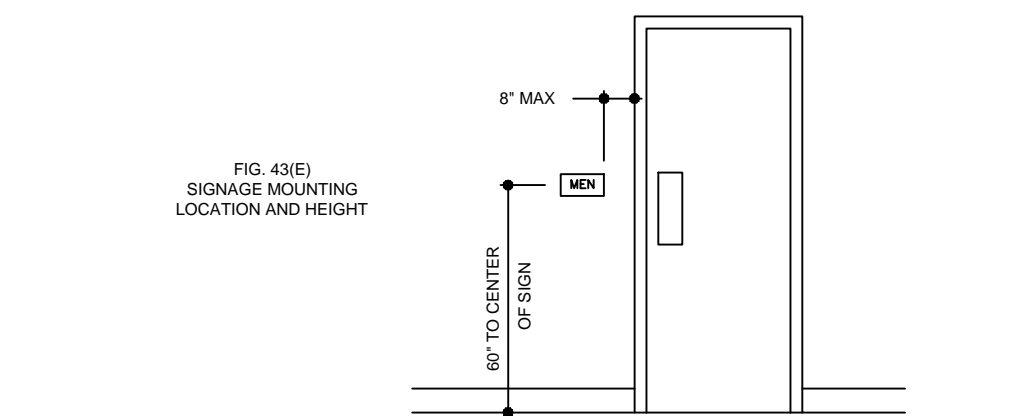


FIG. 43 SIGNAGE SPECIFICATIONS

- THE CHARACTERS AND BACKGROUND OF SIGNS SHALL BE EGGSHELL MATTE, OR OTHER NON-GLARE FINISH. CHARACTERS AND SYMBOLS SHALL CONTRAST WITH THEIR BACKGROUND - EITHER LIGHT CHARACTERS ON A DARK BACKGROUND OR DARK CHARACTERS ON A LIGHT BACKGROUND.

- WHERE PERMANENT IDENTIFICATION IS PROVIDED FOR ROOMS AND SPACES, SIGNS SHALL BE INSTALLED ON THE WALL ADJACENT TO THE LATCH SIDE OF THE DOOR. WHERE THERE IS NO WALL SPACE TO THE LATCH SIDE OF THE DOOR, INCLUDING AT DOUBLE LEAF DOORS, SIGNS SHALL BE PLACED ON THE NEAREST ADJACENT WALL. MOUNTING HEIGHT SHALL BE 60 INCHES ABOVE THE FINISH FLOOR TO THE CENTERLINE OF THE SIGN. MOUNTING LOCATION FOR SUCH SIGNAGE SHALL BE SO THAT A PERSON MAY APPROACH WITHIN 1 INCHES OF SIGNAGE WITHOUT ENCOUNTERING PROTRUDING OBJECTS OR STANDING WITHIN THE SWING OF A DOOR. (SEE FIG. 43(E)).

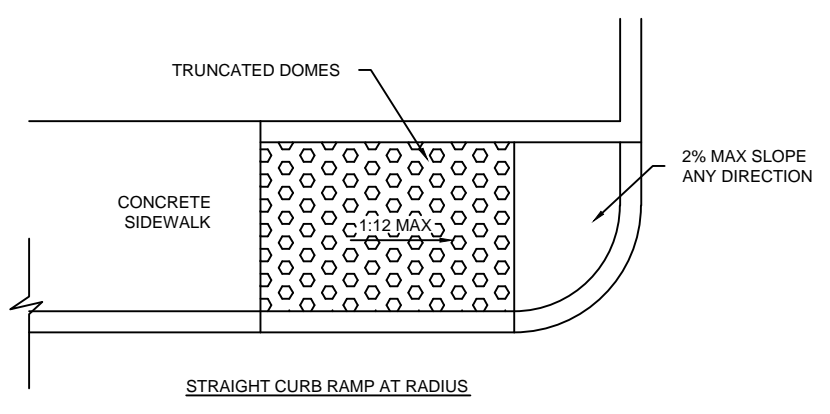
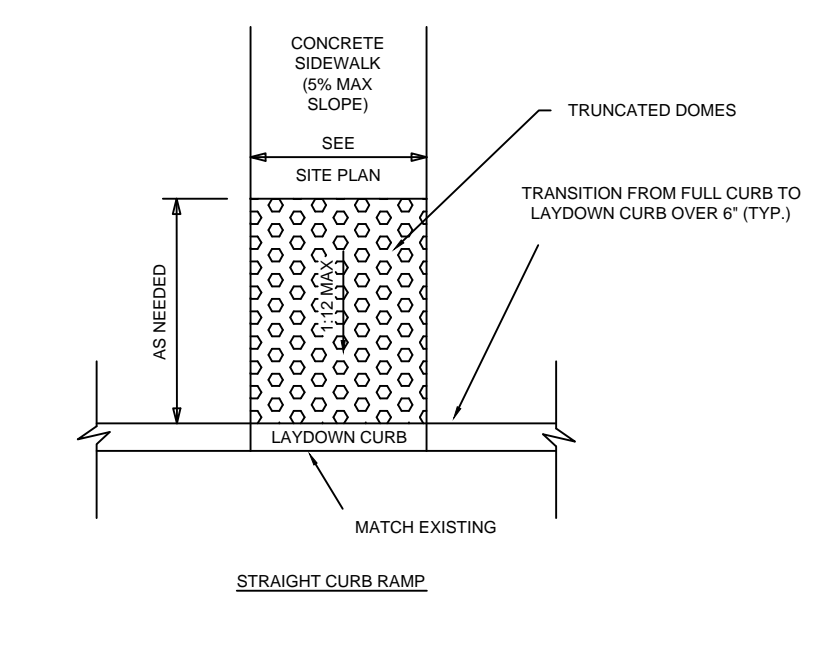


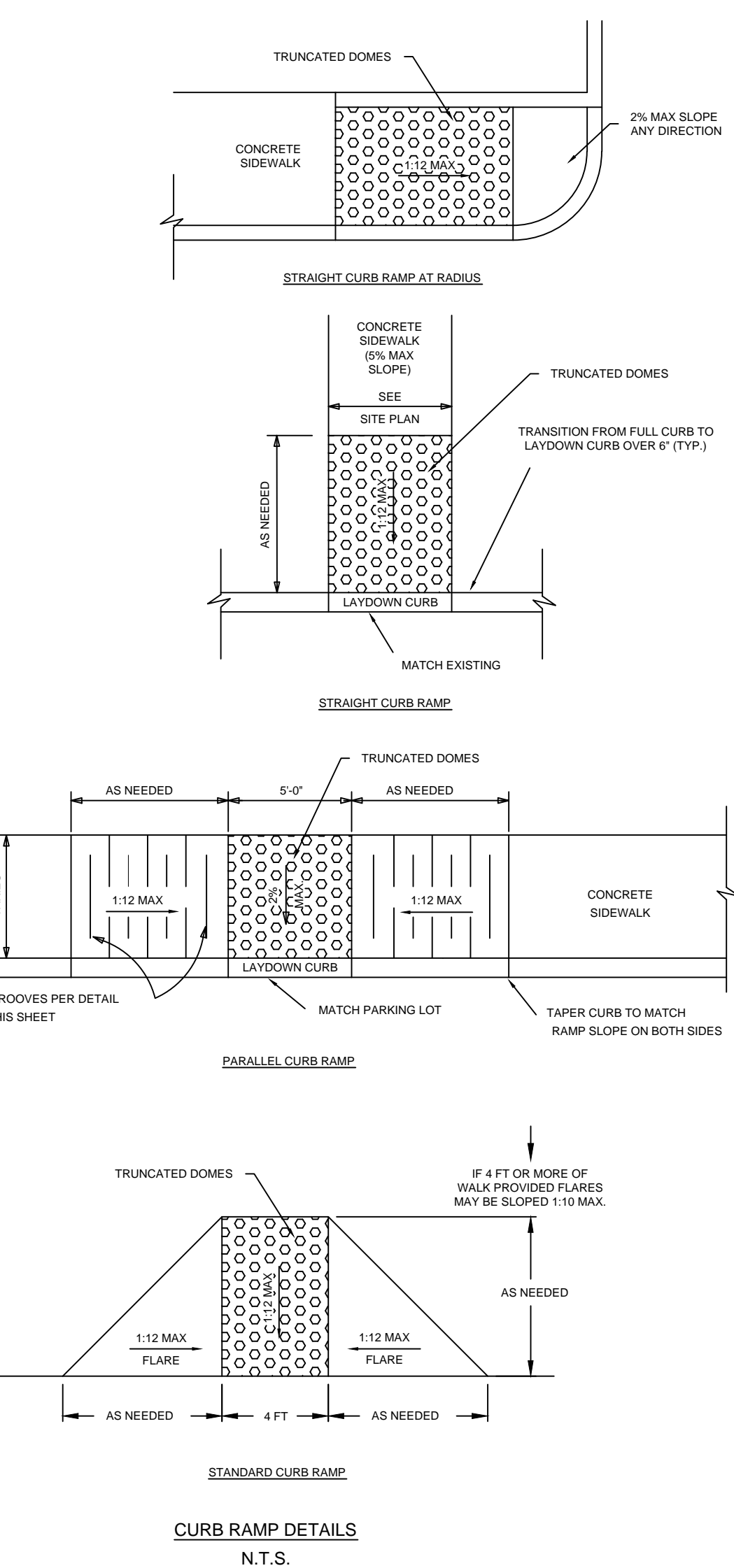
- SIGNS PROVIDING DIRECTION TO OR INFORMATION ABOUT FUNCTIONAL SPACES OF THE BUILDING SHALL HAVE THE FOLLOWING PROPERTIES:

- LETTERS AND NUMBERS ON SIGNS SHALL HAVE A WIDTH-TO-HEIGHT RATIO BETWEEN 3:5 AND 1:1 AND A STROKE-WIDTH-TO-HEIGHT RATIO BETWEEN 1:5 AND 1:10 USING AN UPPER-CASE "X" FOR MEASUREMENT. LOWER CASE LETTERS ARE PERMITTED.
- CHARACTERS AND NUMBERS ON OVERHEAD SIGNS SHALL BE SIZED ACCORDING TO THE VIEWING DISTANCE FROM WHICH THEY ARE TO BE READ. THE MINIMUM HEIGHT IS MEASURED USING AN UPPER CASE X. LOWER CASE CHARACTERS ARE PERMITTED.
- THE CHARACTERS AND BACKGROUND OF SIGNS SHALL BE EGGSHELL MATTE, OR OTHER NON-GLARE FINISH. CHARACTERS AND SYMBOLS SHALL CONTRAST WITH THEIR BACKGROUND - EITHER LIGHT CHARACTERS ON A DARK BACKGROUND OR DARK CHARACTERS ON A LIGHT BACKGROUND.

MOUNTING HEIGHTS FOR ADULTS AND CHILDREN				
	AGES: 4 THRU 10 OR 11 GRADES PRE-K THRU 5 OR 6	AGES: 11 THRU 14 OR 15 GRADES 6 THRU 8 OR 9	AGES: 15 THRU ADULT GRADES: 9 THRU 12+	
REACH RANGES				
FRONTAL APPROACH	42" MAX.	45" MAX.	48" MAX.	
SIDE APPROACH	48" MAX.	51" MAX.	54" MAX.	
RAMPS AND STAIRS				
TOP OF HANDRAIL GRIPPING SURFACE	28" - 34"	30" - 34"	34" - 38"	
ELEVATORS				
CAR CONTROL FLOOR BUTTONS:				
FRONTAL APPROACH	42" MAX.	45" MAX.	48" MAX.	
SIDE APPROACH	48" MAX.	51" MAX.	54" MAX.	
EMERGENCY COMMUNICATION:				
HIGHEST OPERABLE PART	42" MAX.	45" MAX.	48" MAX.	
PLATFORM LIFTS (WHEELCHAIR LIFTS)				
CONTROL/SOPERATING MECHANISMS	28" - 42"	28" - 45"	28" - 48"	
DRINKING FOUNTAINS AND WATER COOLERS				
FRONTAL APPROACH:				
SPOUT HEIGHT (TO OUTLET)	32" MAX.	34" MAX.	36" MAX.	
KNEE CLEARANCE	26" MIN.	28" MIN.	27" MIN.	
SIDE APPROACH:				
SPOUT HEIGHT (TO OUTLET)	32" MAX.	34" MAX.	36" MAX.	
WATER CLOSETS				
TOP OF SEAT	14" - 15"	15" - 17"	17" - 19"	
GRAB BARS	28" - 30"	30" - 32"	33" - 36"	
FLUSH CONTROLS	42" MAX.	44" MAX.	44" MAX.	
URINALS				
RIM OF BASIN	14" MAX.	16" MAX.	17" MAX.	
FLUSH CONTROLS	42" MAX.	44" MAX.	44" MAX.	
LAVATORIES AND SINKS				
RIM AND COUNTER SURFACE	30" MAX.	32" MAX.	34" MAX.	
KNEE CLEARANCE	26" MIN.	28" MIN.	27" MIN.	
TO FAUCETS FROM FRONT EDGE	18" MAX.	20" MAX.	25" MAX.	
MIRRORS				
TO BOTTOM OF REFLECTIVE SURFACE	34" MAX.	37" MAX.	40" MAX.	
WHEN PERMITTED UNDER EXCEPTION 4, SECTION 4.1.3(5), IN FACILITIES SERVING CHILDREN UNDER THE AGE OF FOUR, WATER CLOSET SEAT HEIGHTS MAY BE LOWER THAN 14" BUT NOT HIGHER THAN 15".				

CURB RAMP NOTES (STANDARD & PARALLEL)

- FULL WIDTH AND DEPTH OF CONCRETE CURB RAMP SURFACES (EXCLUDES FLARES) SHALL BE BROOM FINISHED WITH GROOVES PLACED PERPENDICULAR TO THE PATH OF TRAVEL AS PER THE FOLLOWING DETAIL:  

- WHILE THE USE OF GROOVES, IF ARRANGED SO THAT WATER WILL NOT ACCUMULATE, MAY BE ACCEPTABLE FOR CURB RAMPS NOT IN THE PUBLIC RIGHT OF WAY PER TEXAS ACCESSIBILITY STANDARDS (TAS) SECTION 2.2.4.4 AS CLARIFIED IN TOLR TECHNICAL MEMORANDUM No. 10-08-01, IN ORDER TO SATISFY THE ADA AND TAS, TRUNCATED DOMES SHALL BE USED (SEE TOLR No. 08-01) USING ONE OF THE FOLLOWING THREE METHODS:  
  
METHOD #1: CAST IN PLACE DETECTABLE WARNING TILES FROM ARMOR-TILE SHALL BE USED ON THE FULL WIDTH AND DEPTH OF THE RAMP SURFACE. PRODUCT INFORMATION SPECS MAY BE OBTAINED FROM:  
ARMOR-TILE ENGINEERED PLASTICS, INC.  
300 INTERNATIONAL DRIVE, STE 100  
WILLIAMSVILLE, NY 14221  
(800) 682-2525 / FAX: (800) 769-4463  
WWW.ARMOR-TILE.COM  
  
METHOD #2: STAMPED CONCRETE. STAMP MOLD PATTERN SHALL CONFORM TO TAS 4.2.9  
  
METHOD #3: DETECTABLE WARNING BRICK PAVERS IN A MANNER CONSISTENT WITH THE TEXAS DEPARTMENT OF TRANSPORTATION (TxDOT) PEDS DETAIL (SHEET 2 OF 4) WITH THE EXCEPTION THAT THEY EXTEND THE FULL DEPTH OF THE CURB RAMP AS OPPOSED TO A DEPTH OF ONLY 24" WHICH IS TYPICAL FOR RIGHT-OF-WAY CURB RAMPS ONLY.  
  
3. FULL WIDTH AND DEPTH OF RAMP SURFACES, OR LANDINGS AS APPLICABLE AT PARALLEL CURB RAMPS, SHALL HAVE A LIGHT REFLECTIVE VALUE THAT SIGNIFICANTLY CONTRASTS WITH THAT OF THE ADJACENT PEDESTRIAN ROUTES (I.E. CONTRASTING COLOR) BY USING ONE OF THE FOLLOWING METHODS (STAMPED OR GROOVED SURFACES ONLY):  
  
A) DRY SHAKER COLOR, SCOFIELD SYSTEMS LITHOCHROME COLOR HARDENER (BRICK RED COLOR #A-38), OR APPROVED EQUAL, PLACED AND TOWELED INTO FRESHLY POURED CONCRETE PER MANUFACTURER'S SPECIFICATIONS FOR COMMERCIAL APPLICATIONS.  
B) CONCRETE ACID STAIN ("BRICK RED" COLOR) APPLIED PER MANUFACTURER'S SPECIFICATIONS FOR COMMERCIAL APPLICATIONS. CONTRACTOR SHALL SUBMIT FOR MANUFACTURER/COLOR APPROVAL TO OWNER.  
  
NOTE 1: FINAL COLOR TO BE SELECTED BY OWNER. HOWEVER, "BRICK RED" COLOR STYLE SHALL BE INCORPORATED IF OWNER DOES NOT DESIRE TO SELECT COLOR.  
  
NOTE 2: ARMOR-TILE DETECTABLE WARNING SURFACES ALREADY COME IN A VARIETY OF CONTRASTING COLORS (BRICK RED, FEDERAL COLOR #22144, SHALL BE CONSIDERED DEFAULT SELECTION IF OWNER DOES NOT DESIRE TO SELECT COLOR).
- RAMP SURFACE DIMENSIONS PROVIDED MAY ONLY CORRESPOND TO STANDARD CURB HEIGHTS LOCATED ON LEVEL SURFACES - 1:12 MAX SLOPE SHALL GOVERN FOR ALL CURB RAMP SURFACES.  




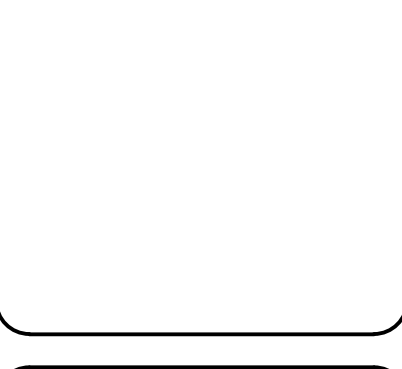
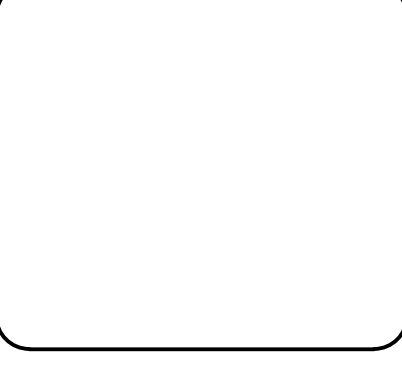
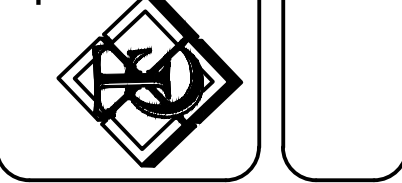
TAS SPECIFICATIONS

REVISIONS:	
DATE	BY

These drawings and accompanying specifications are the sole property of Timbercon Construction, Inc. and may not be used for any other project or by any other person or general contractor without prior written permission from Timbercon Construction, Inc.

TRUE VISION CHURCH  
2826 ACKERMAN ROAD  
KIRBY, TX 78219  
(512) 550-4646  
(512) 550-2544  
www.truevisionchurch.org

TIMBERCON CONSTRUCTION, INC.  
1241 UNIVERSAL CITY BLVD.  
UNIVERSAL CITY, TX 78148  
(210) 590-2544  
(210) 590-2545  
www.timbercon.net



SHEET NUMBER

02

JULY 28, 2010

